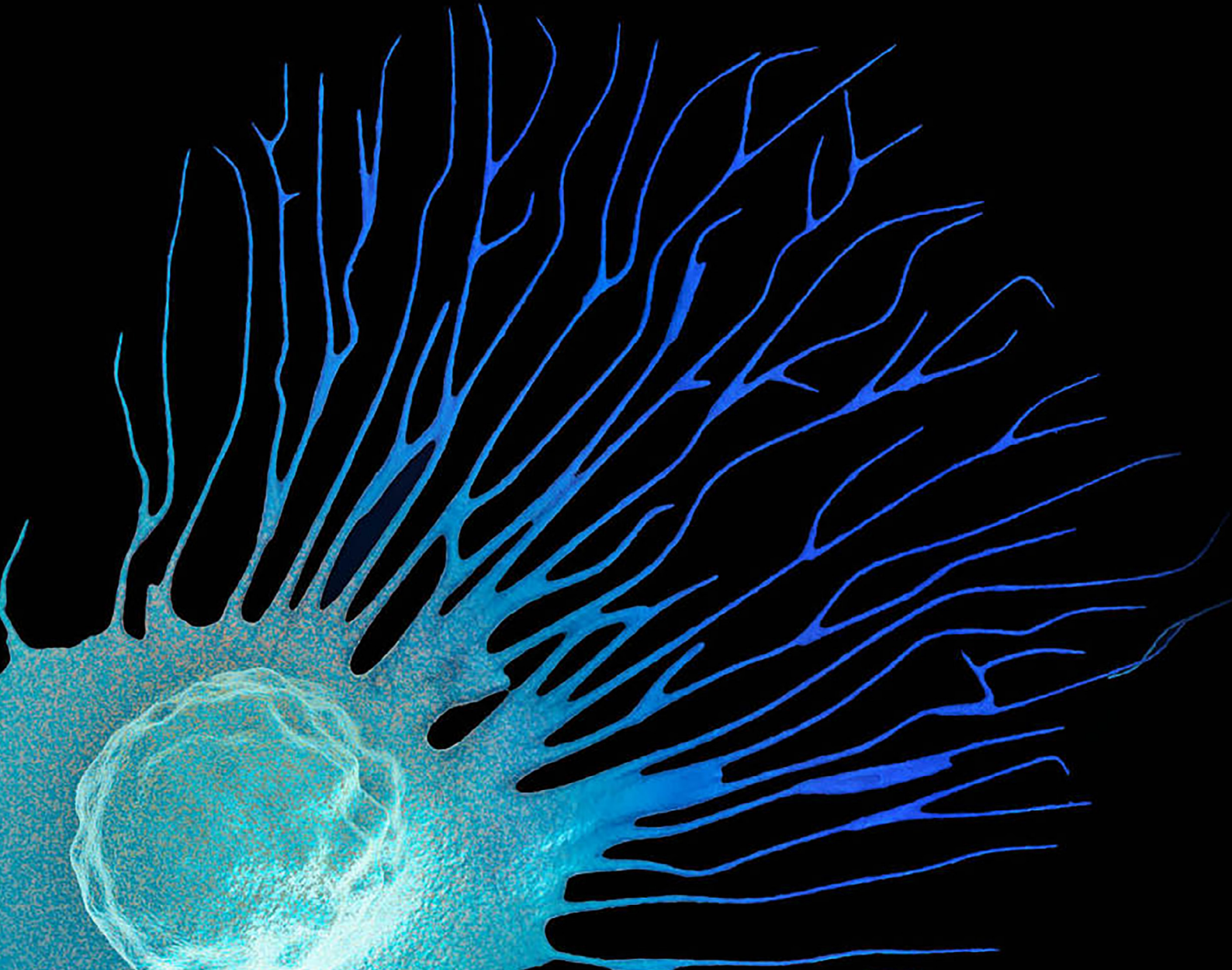


CANCER
RESEARCH
HORIZONS

#innovationsummit2023

Innovation Summit 2023

Tuesday 21 November 2023



Contents

Welcome	3
Agenda	4
Speaker and session information	
An entrepreneurial mindset: the journey from discovery to impact	7
From lab to application: why engage in research translation and lessons learned	8
Charting the pathways to patient impact: licensing and industry partnerships in translating research	11
Charting the pathways to patient impact: the role of start-ups in oncology innovation	14
Technical parallel panel session Collaborating with TechBio: how is AI impacting oncology and how can academics support its development through effective industry partnerships?	17
Technical parallel panel session Translating novel biomarkers and diagnostics for cancer towards patient impact	20
Emerging trends in oncology innovation	23
Marketplace exhibition	25
Attendee list	28

On behalf of Cancer Research Horizons, it gives me great pleasure to welcome you to our Innovation Summit 2023.

It has been a year since we formed Cancer Research Horizons – a new innovation engine to accelerate the translation of cutting edge-science into treatments and diagnostics for the benefit of people with cancer.

At Cancer Research UK, we fund over £400m of world-class cancer research each year, generating high impact research outputs that could revolutionise the way we prevent, diagnose and treat cancer. But transforming discovery research into clinical application is challenging. Cancer Research Horizons is a critical part of Cancer Research UK's translational infrastructure. It brings together extensive commercialisation expertise with therapeutic innovation capabilities, to bridge the development gap and address the challenges in translating world-class research into the tools, tests and treatments of tomorrow.

Through changing our approach to discovery research and commercialisation, and through the launch of new initiatives including those of our Entrepreneurial Programmes, Cancer Research Horizons aims to provide you with the support, infrastructure and the education you need to embark and thrive on your entrepreneurial journey to translate your research.

Today we will hear from those who have undertaken this journey, taking their research from discovery, through to delivering patient impact. We will hear from speakers from all parts of the entrepreneurial ecosystem, who will share their expertise and from whom you can gain insights. You will have the opportunity at our marketplace and break sessions to network and meet with innovators, entrepreneurs and translational support providers from across the breadth of the Industry, Ventures and Academic landscape.

Cancer Research Horizons is the innovation engine built to complement Cancer Research UK's network of exceptional researchers and we are delighted to welcome so many of you here today.



We hope you find the day productive,
enjoyable and inspiring.

Tony Hickson
Chief Business Officer
Cancer Research Horizons

Agenda

08.45 – 09:15	Registration
09:15 – 09:30	Opening address Speaker: Iain Foulkes, Cancer Research Horizons
09:30 – 10:00	An entrepreneurial mindset: the journey from discovery to impact Speaker: Simon Boulton, The Francis Crick Institute
10:00 – 10.45	From lab to application: why engage in research translation and lessons learned Speakers: Chair: Mina Bekheet, Panacea Innovations Susanti Susanti, PT. PathGen Diagnostik Teknologi Bakul Gupta, Deliver Biosciences (previously: ImmTune Therapies) Matt De Vries, Institute of Cancer Research
10.45 – 11:15	Refreshment break and networking
11:15 – 12:00	Charting the pathways to patient impact: licensing and industry partnerships in translating research Speakers: Chair: Phil Clare, Queen Mary Innovation Tony Ng, King's College London / GSK Julie Little, Cancer Research Horizons Ana Rio-Machin, Barts Cancer Institute QMUL Andrew Crockford, Johnson & Johnson Innovation
12:00 – 12.45	Charting the pathways to patient impact: the role of start-ups in oncology innovation Speakers: Chair: Jason Mellad, Start Codon Phil Masterson, Cancer Research Horizons. Rebecca Todd, Longwall Venture Partners Olivia Cavlan, Alchemab Therapeutics Jonathan Kwok, Infinitopes
12.45 – 14.00	Lunch and networking Drop in clinic – book in advance

14.00 – 14.45	Concurrent sessions: attendees should indicate which session they are interested in attending.
Max Rayne Auditorium	Technical parallel panel session: Collaborating with TechBio: how is AI impacting oncology and how can academics support its development through effective industry partnerships? Speakers: Chair: Joseph Day, Cancer Research Horizons Mark Halling-Brown, Royal Surrey NHS Foundation Trust Daniel Veres, Turbine Fahd Malik, Google Una Pipic, Tempus
Guy Whittle Auditorium	Technical parallel panel session: Translating novel biomarkers and diagnostics for cancer towards patient impact Speakers: Chair: Christopher Peters, Imperial College London Peter Bannister, Romilly Life Sciences Camille Terfve, Mewburn Ellis Melody Ni, NIHR London In Vitro Diagnostics Co-operative, Imperial College London Sam Jole, Veracyte
14.45 – 14.50	Transfer time to auditorium
14.50 – 15.40	Panel session: emerging trends in oncology innovation Speakers: Chair: Barbara Domayne-Hayman, The Francis Crick Institute Giovanni Mariggi, Medicxi Ventures Neil Jones, Cancer Research Horizons Khatereh Ahmadi, MSD
15.40 – 15.50	Closing remarks
15.50 – 17.00	Networking drinks

Speaker and session information

An entrepreneurial mindset: the journey from discovery to impact



Simon Boulton
The Francis Crick Institute

For the last 30 years, Simon Boulton's research has investigated the mechanisms of DNA repair, with emphasis on DNA double strand break (DSB) repair pathways and their utilization in meiosis, during DNA replication and at telomeres. His work using genetics, biochemistry and biophysical approaches has led to the discovery of novel DNA repair genes and revealed how DNA repair pathway vulnerabilities can be exploited for the treatment of cancer.

Most notably, Simon's work has played an instrumental role in shaping our understanding of the regulation and execution of homologous recombination (HR), a key DSB repair pathway frequently inactivated in cancer. His work has also revealed how the ends of chromosomes are protected from promiscuous repair, which he discovered is fundamentally different between pluripotent, somatic and cancer cell states.

Simon is co-founder and VP Science Strategy of Artios Pharma Ltd, a biotech company developing small molecule DNA repair inhibitors to selectively kill cancer cells either as mono-therapies or in combination with

existing treatments. Simon provides R&D advice and assists the executive team in the evaluation of new pipeline opportunities from the global DNA repair network.

Simon is also Director of RadNet City of London, a Cancer Research UK initiative to accelerate our understanding of radiation biology to improve treatments for cancer patients. With his background in translation and commercialisation, Simon works closely with the Crick Translation team to promote translation at the Crick, serving on the steering committees for our industry partnerships and our translation advisory group.

Finally, Simon chairs the Discovery Research Committee for Cancer Research UK, serves on the Bioscience and Biomedicine Committee for the Novo Nordisk Foundation and provides ad hoc advice to various start-up and venture investment firms. Simon is an EMBO Member, Fellow of the Academy of Medical Sciences and Fellow of the Royal Society. He has also been awarded the Colworth Medal, the Royal Society Francis Crick Medal, the EMBO Gold Medal and the Paul Marks Prize for Cancer Research.

From lab to application: why engage in research translation and lessons learned



Mina Bekheet
Panacea Innovations

Dr. Mina Bekheet, a Millennial Entrepreneur and Venture Capitalist, is on a mission to revolutionise healthcare and ensure universal equal access to transformative solutions. As the Founder and CEO of Panacea, he leads an innovative enterprise committed to discovering, launching, financing, and scaling the next wave of life sciences and health tech innovation.

With over a decade of experience in pharma, health tech, and biotech commercialisation and investment, Dr. Bekheet has expertly cultivated Panacea's portfolio, nurturing 300+ startups valued at c.GBP£1 billion, and realised a number of successful exits.

Recognitions include Europe's Forbes' 30 Under 30 and contributions to the House of Lords "Bell's Report" to shape the UK's Life Science Strategy. Dr. Bekheet also serves on several Boards, advises international bodies, and is an External Lecturer at Oxford's Saïd Business School.

Dr. Bekheet holds a PhD in Oncology from the University of Oxford and a Masters in Drug Discovery from University College London.

**Susanti Susanti**

PathGen Diagnostik Teknologi

Santi is a trained pharmacist originally from Indonesia. She finished her PhD in Molecular Pathology Group, School of Medicine, University of Nottingham in 2020. She then continued doing research in the same group as a Postdoctoral Research Fellow. In November 2022, she started her new role as Postdoctoral Researcher with Professor Owen Sansom at Cancer Research UK Scotland Institute in Glasgow.

In early 2020, She combined her scientific knowledge and skills with her personal experience as cancer survivor to found PathGen Diagnostik Teknologi, a start-up which focuses on utilising low-cost technology for molecular genotyping to guide the care of cancer (and other diseases) in resource-limited countries such as Indonesia. Later in 2021, Santi with PathGen has been selected as the Global Winner of the People's Choice Award of Extreme Tech Challenge, the world's largest start-up and social innovation competition.

Santi led and managed the PathGen team in Indonesia to perform clinical validation of a molecular diagnostic test for colorectal cancer using methodology she developed during her PhD. In July 2022 (within two years), the molecular test BioColoMelt-Dx has been launched and obtained In-vitro Diagnostics approval from the Indonesian authority. The product can now be used widely for colorectal cancer patients in Indonesia to guide for better treatment options and screen for familial risk. For her work, in November 2022 Santi was granted the Innovator Award for Pharmaceutical and Medical Device by the Indonesian Ministry of Health, as well as the Early Career Entrepreneur of the Year 2022 by Cancer Research Horizons.

Santi hopes to promote global, collaborative, inclusive and impact-driven research and innovation through her continuous involvement in PathGen and her new role at the Cancer Research UK Scotland Institute.



Bakul Gupta

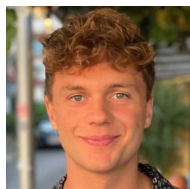
Deliver Biosciences (previously: ImmTune Therapies)

Dr Bakul Gupta is the CEO and co-founder of Deliver Biosciences, a preclinical stage cell therapy biotech which is developing safe, scalable and affordable in vivo cell therapies. The company is leveraging its unique platform to effectively deliver genetic cargoes directly to targeted cells and applying it across different indications in cell and gene therapies.

Bakul founded the company in 2019, along with her business partner Dr George Tetley, after an eight-month long research investigation into the challenges faced by current cell and gene therapy companies. She holds a PhD and BSc in Nanotechnology and Chemistry from UNSW Australia and finished her postdoctoral training at Imperial College London before starting

Deliver Biosciences. Since incorporation, she's raised pre-seed and seen investments for several million pounds, established national and international partnerships and grown the team to accelerate the development of their proprietary platform technology.

Bakul has over 10 years experience in designing nano- and bio-materials for a diverse set of biomedical applications and has previous experience in commercialisation of medical devices. She's recently been listed as one of the top 30 biotech entrepreneurs to watch and awarded Innovate UK's Women In Innovation award – recognised as a trailblazer in the UK entrepreneurial ecosystem.



Matt De Vries

The Institute of Cancer Research

Matt is a PhD researcher at the Institute of Cancer Research in London, focussing on 3D computer vision techniques applied to cancer biology. He is also a visiting researcher at Imperial College London and The Francis Crick Institute. Matt obtained a BSc (Hons) degree in statistics from the University of Cape Town in South Africa and an MSc in artificial intelligence from the University of Southampton.

Matt's research attempts to predict the heterogeneous response to therapy in 3D cancer models and to use this knowledge to design novel therapies targeting resistant cells. Matt has started a company called Sentinal 4D which aims to predict the likelihood of success of cancer drugs in clinical trials based on the morphology of drug-treated cancer models. He has been awarded Cancer Tech Accelerator grant funding and has been shortlisted for the Cancer Research Horizons Early-Career Entrepreneur of the Year award.

Charting the pathways to patient impact: licensing and industry partnerships in translating research



Phil Clare

Queen Mary Innovation Ltd

Phil Clare is CEO of Queen Mary Innovation Ltd, the wholly owned subsidiary of Queen Mary charged with maximising the impact of our research using commercial tools. He's committed to building an outstanding innovation ecosystem at Queen Mary University of London. Previously he was Director of Innovation and Engagement at the University of Oxford and also worked at the Universities of Bath and Bournemouth.

Phil is a member of Research England Council and Ambassador (and former Chair) for PraxisAuril. He previously served on the committee of ARMA and as chair of the KEC evaluation panel for UUK. He's a Registered Technology Transfer Professional and a Member of the Institute of Directors. He used to be a chemist and has degrees from Kings College London and the Universities of Bath, Bournemouth and Oxford.



Tony Ng

King's College London / GSK

Tony Ng (FMEDSCI, MB ChB, MRCP, FRCPath, PhD) brings a rich spectrum of knowledge and capabilities with clinical experience in treating AIDS patients (with opportunistic infections and cancers) and fundamental immunology skills. He is also a pioneer of molecular imaging in cancer. He was the first person to use antibody based fluorescence lifetime imaging (FLIM) approaches in tumour cells and tissues to monitor protein states and function.

He has adopted a multidisciplinary approach to understand cancer recurrence and also to stratify molecularly targeted agents in combination with immunotherapy. His research bridges the gap between physics, biology and medicine, particularly in the field of translational

cancer research. Between 2008 and 2019 he directed the KCL and UCL Comprehensive Cancer Imaging Centre (CCIC, one of four centres funded by CRUK & EPSRC in the UK). During this role, he worked cooperatively with colleagues and leaders in a wide variety of disciplines (imaging, cell biology, oncology, bioinformatics, surgery, pathology, genomics, as well as physical science disciplines such as mathematics, physics, chemistry and engineering). More recently, Tony Ng has been the Director of the Comprehensive Cancer Centre at King's College London (2017-2023). Since then he has stepped down but retained his KCL Richard Dumbleby Professor of Cancer Research position. He is currently also Vice President and Head of Oncology Translational Research Organisation within GSK.



Julie Little

Cancer Research Horizons

Julie leads Cancer Research Horizons Strategic Alliances and Business Operations teams, managing a portfolio of long-term, strategic alliances with one or more external partners in Europe, US and Japan, to translate novel academic research based on shared values and common goals to address a cancer challenge. The teams also support the building of new alliances, business intelligence, data analysis and post-deal administration. Julie played key roles in establishing alliances with Merck Healthcare KGaA, AstraZeneca, and Abcam.

Cancer Research Horizons is the commercial arm of Cancer Research UK. Julie joined Cancer Research Horizons in 2012, transitioning into business development after nearly 25 years in discovery research at Unilever plc and Genzyme.



Ana Rio-Machin

Barts Cancer Institute (QMUL)

Dr Ana Rio-Machin is a lecturer and group leader in the Centre for Haemato-Oncology at the Barts Cancer Institute (BCI, Queen Mary University of London), with a long-standing experience in genomics and functional biology in haematological cancers.

Ana graduated in biology and biochemistry at the University of Salamanca and received her Masters in molecular biomedicine at the Autonomous University of Madrid. She completed a PhD programme at the Spanish National Cancer Research Centre (CNIO) and since 2015, she works at the BCI, leading her own research group from October 2023.

Ana has an extensive record of scientific publications and is a regular speaker at the international conferences in the field. In addition, she's received numerous grants and awards such as the Blood Cancer UK Early Career Researcher Award in 2019, the European

Haematological Association Junior Research Grant in 2021 and the Cancer Research UK Early Detection and Diagnosis Award 2023.

Anna dedicates great efforts to promote academia-industry collaborations, to facilitate the transformation of her results into real benefits for patients. She's also part of the panels of experts in Europe and the UK that are currently developing guidelines to establishing a consensus for the management of patients with germline predisposition to myeloid malignancies. Through her work, Ana contributes to improve diagnosis and treatment for leukaemia patients, and the early detection of leukaemia in at-risk family members. She also helps to understand the biology underlying hereditary and sporadic forms of leukaemia.



Andrew Crockford

Johnson & Johnson Innovation

Andrew Crockford is the early innovation partnering lead for oncology in the EMEA region. This involves the identification and evaluation of therapeutic assets, working closely with J&J oncology, before ultimately leading the related transaction. Prior to his time at J&J, Andrew held a role within Cancer Research UK's Commercial Partnerships team for 6 years.

Charting the pathways to patient impact: the role of start-ups in oncology innovation



Jason Mellad
Start Codon

Jason is Start Codon's Co-Founder and CEO and is responsible for developing and implementing its strategy, managing and dealing with investor relations and working closely with Start Codon's portfolio companies to set and monitor their progress and to help them secure further investment and non-dilutive finance. Jason regularly sits as a director or observer on the boards of Start Codon's portfolio companies.

Jason is a scientist entrepreneur passionate about translating innovative technologies into more effective therapies and better patient outcomes. Previously, he was CEO of Cambridge Epigenetix which has developed a proprietary epigenetic biomarker discovery platform for the development of new diagnostic assays and the identification of novel drug targets. While at Cambridge Epigenetix, Jason transformed the research tools company into a leading liquid biopsy player and led two successful fundraises (Series B and C) for a total of \$49.8m.

Prior to joining Cambridge Epigenetix, Jason was a Business Development Manager for Horizon Discovery's diagnostics division where he was responsible for developing and launching new reference standards for genomic clinical assays. He also served as an Associate at Cambridge Enterprise, the technology transfer office of the University of Cambridge, where he managed a broad intellectual property portfolio and fostered new spinouts.

Jason was awarded a Marshall Scholarship to obtain his PhD in Medicine from Clare College, University of Cambridge with a focus on vascular biology. He has a BSc (Summa Cum Laude) in Molecular Biology and Chemistry from Tulane University.



Phil Masterson

Cancer Research Horizons

Phil has a BSc in Cell Biology from the University of Essex, and a PhD in Virology from the University of Cambridge. After a post-doc position at the National Institute for Medical Research (NIMR) in London, Phil spent a number of years managing R&D programmes in the biotech industry. He moved into technology transfer in 2003

when he joined Cancer Research Horizons (formerly called Cancer Research Technology). Since that time he has built up extensive experience of managing and commercialising healthcare technologies from academic origins.

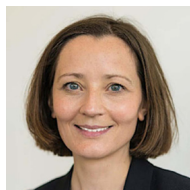


Rebecca Todd

Longwall Ventures

Rebecca Todd (PhD, MBA) is a venture capital investor in early-stage life science and medical technology companies for Longwall Ventures. She began venture investing in 2006 while at Oxford Capital, where she took responsibility for the Oxford Gateway Funds' investments into healthcare and life science companies.

Rebecca went on to become Director, Healthcare Ventures at Imperial Innovations (now part of IP Group). Prior to becoming an investor, her earlier career was as a marketing consultant to pharmaceutical and life science technology companies. Rebecca has a PhD in Genetics from Nottingham University and an MBA from Oxford University. She joined Longwall Ventures in 2017 after a sabbatical break spent exploring South America in a campervan.



Olivia Cavlan
Alchemab Therapeutics

Olivia Cavlan is Alchemab's Chief Corporate Development and Strategy Officer where she oversees global business development and partnerships and leads corporate strategy.

Prior to Alchemab Olivia was an Investment Principal at SV Health Investors and a Partner with McKinsey Company where she was part of the leadership team in the Healthcare Private Equity and Pharmaceutical practices. While at McKinsey, Olivia co-led the global Real World Evidence practice and QuantumBlack biopharmaceutical offering where she led work on target discovery and clinical development.

She has also led several global biopharma R&D transformation efforts and developed clinical and commercial strategies for a number of preclinical assets.

Olivia is a Non-Executive Director for the UK BioIndustry Association and a member of the Investment Committee for Cancer Research UK's (CRUK) Seed fund. She also co-founded and sits on the Board of Directors of Sevenless Therapeutics, a small molecule pain company.



Jonathan Kwok
Infinitopes Limited

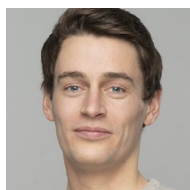
Dr Jonathan Kwok is a clinician-scientist, Cancer Research UK cancer vaccines fellow at Oxford University, and CEO of Infinitopes Precision Immunomics. He led the company's foundation in 2021, to combine world-leading technologies spanning antigen discovery, CD8 T-cell stimulation, vaccinology, early phase clinical trials and biomanufacturing. Infinitopes has since completed its oversubscribed seed round, and won two prestigious Innovate UK grants, to accelerate its lead therapies into phase I/IIa clinical trials next year.

Prior to Oncology, Jonathan was a Starmine-winning biotech investment banker, advising leading investors and C-suite executives across the UK, Europe, North America and Asia-Pacific. Right now, his priorities are recruitment and partnerships. However, he also enjoys supporting the life sciences ecosystem, in particular mentoring new hires and exciting spin-out teams – so do reach out.

Technical parallel panel session

Collaborating with TechBio:

How is AI impacting oncology and how can academics support its development through effective industry partnerships?



Joseph Day
Cancer Research Horizons

Joe is a trained biochemist and leads Cancer Research Horizon's Data & AI Business Development team. This team works to support researchers in maximising the impact of their data by facilitating commercial data partnerships. Joe was a key member of the team that published Cancer Research UK's Research Data Strategy and has been at CRUK/CRH for over 7 years. Prior to joining the Business Development Team, he worked across funding, clinical development and post-signature management.



Mark Halling-Brown

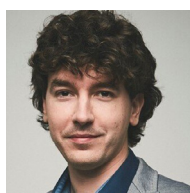
Royal Surrey NHS Foundation Trust

Professor Mark Halling-Brown is a consultant clinical scientist who runs a scientific computing team (SciCom) at the Royal Surrey NHS Foundation Trust. His background is in bioinformatics, computational immunology, and computer sciences. More recently he's worked in medical physics, focusing on the safe development and adoption of healthcare software. His team lead or participate in over 28 research projects and databases covering a variety of areas of healthcare research.

The SciCom team have considerable experience in development, validation and deployment of software tools and techniques across the NHS. The team works extensively with industry to provide data for training and independent validation of AI products and supports deployment of commercial tools into UK screening services.

The best example of datasets the team have developed is the OPTIMAM project, one of the world's largest mammography image databases, which has led to involvement in development of AI techniques to automate breast cancer detection and estimate future cancer risk. The database has over 8.5 million images and is continuing to grow into a world class tool for stimulating research. They are experienced in large-scale image/data collection, storage and sharing of research data.

The current focus of the team's work is on the provisions of correct datasets for training and independent validation of AI tools for healthcare, as well as the safe adoption and integration into healthcare settings. They are active in developing techniques and approaches required to establish TREs suitable and able to support deep-learning training and validation at scale.



Daniel Veres

Turbine

As a medical doctor specialising in cancer research at some of the world's top research institutes, Daniel helps design innovative and durable treatments against cancer by converting our platform's computational results into clinical interpretations. His main responsibility lies in understanding scientific and medical challenges, to then guide our team of biologists, translational and data scientists in generating novel findings to move better treatments to patients.


Una Pipic

Tempus

Una leads Europe and Asia-Pacific markets at Tempus, a technology company advancing precision medicine through the practical application of artificial intelligence in healthcare. She is responsible for business growth, product development and operational excellence.

Prior to this role, she led efforts to launch and scale Tempus' clinical oncology testing operations, as well as clinical data structuring operations, in addition to launching and running the infectious diseases testing business. Prior to Tempus, she held senior management roles in media technology, communications and tech startups, always focused on rapid growth and transformation. Una holds an MBA from the University of Chicago Booth School of Business, and undergraduate degree from the American University of Paris.


Fahd Malik

Google

Translating novel biomarkers and diagnostics for cancer towards patient impact

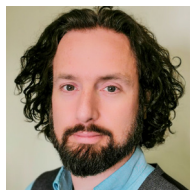


Christopher Peters
Imperial College London

Christopher went to medical school in Leeds and after completing basic surgical training moved to Cambridge to carry out a PhD with Professor Rebecca Fitzgerald. During his PhD he developed a four gene signature to predict outcome in oesophageal adenocarcinoma, which was validated in 371 independent cases.

He also jointly set up the Oesophageal Cancer Clinical and Molecular Strategy (OCCAMS) collaboration, which went on to be selected to run the International Cancer Genome Consortium's whole genome sequencing project in oesophageal adenocarcinoma. OCCAMS has now recruited in excess of 4,000 patients and resulted in over 35 publications including in Nature (2 papers), Nature Genetics (4 papers) and Nature Communications (4 papers).

After moving to London to complete his higher surgical training, Christopher was appointed as a Clinical Senior Lecturer and Consultant Upper GI surgeon at Imperial College London with a specialist interest in transitioning new technologies to the patient. As the biomarker lead for the National Institute of Health and Care Research London IVD Co-operative, he has a programme built around trying to better understand which biomarkers are likely to achieve clinical adoption. This programme aims to bridge the gap between the millions spent on biomarker discovery and validation and the handful that achieve clinical success.



Peter Bannister

Romilly Life Sciences Ltd

Peter has helped build multiple high-growth biomedical businesses, commercialising innovative products for surgery, diagnostics and digital treatment pathways in multiple international markets and leading R&D, regulated product development and strategic business development.

Peter holds a DPhil in medical imaging from the University of Oxford, where he also led pioneering commercial development of artificial intelligence technologies which have since been implemented globally by Rolls Royce Plc. He is a Chartered Engineer, Fellow of the Institution of Engineering and Technology (IET) and holds an Executive MBA (Hons).

Peter founded Romilly Life Sciences to help health, tech and pharma organisations implement evidence-led digital product strategy, including technologies such as artificial intelligence, supported by effective cross-sector collaboration frameworks and coaching.

He is also co-founder of Migration Biotherapeutics, Honorary Professor at the University of Birmingham Centre for Regulatory Science and Innovation, Fellow and Chair of Healthcare at the IET, an Academy of Medical Sciences Future Leader in Innovation Enterprise and Research (FLIER) and works with HDRUK and NIHR to support leadership development and R&D funding programmes.



Camille Terfve

Mewburn Ellis LLP

Camille co-heads the bioinformatics and digital health practice at Mewburn Ellis. Her work focuses on data-driven and computer-implemented technologies in the life science space, including bioinformatics/computational biology and ML/AI analysis of biological and medical data.

Her clients work in a variety of fields from pharma to bioprocessing. She has Master's degrees in bioengineering and in computational biology from the universities of Brussels and Cambridge, and did her PhD at the EMBL-European Bioinformatics Institute where she looked at network-based analysis of high-content proteomics data. Camille has over 10 years' experience as a patent attorney working in this field, and is passionate about the power of data in all aspects of life and technology.



Melody Ni

NIHR London In Vitro Diagnostics Co-operative, Imperial College London

Melody is Senior Research Fellow within the Department of Surgery and Cancer at Imperial College. She is an expert in decision analysis, risk analysis and health technology assessments. She co-leads the Methodology team within NIHR London IVD, with over 15 years of experience helping companies and researchers design and develop healthcare innovations in a variety of healthcare settings.

Melody has developed tools, methods and processes for accelerating the translation of innovations, including the POCKET point of care key evidence checklist, the Lean and Agile Multi-dimensional Process (LAMP), and the MedKET medical device key evidence list, using evidence to support product design and commercial decisions.



Sam Jole

Veracyte

Sam initially trained as a molecular biologist and then worked as a cancer research nurse in the NHS, developing and leading the expansion of clinical trial services. He then transitioned to industry, where he worked in oncological clinical development before transitioning to medical affairs, where he led the launch of several molecules and MABs across Europe. He has now worked in genomic diagnostics for several years in a global role, developing and bringing biomarkers to patients across the world.

Disclaimer: All views expressed during the summit are Sam's own and do not represent the views or opinions of his employer.

Emerging trends in oncology innovation



Barbara Domayne-Hayman
Francis Crick Institute

Barbara has worked on the commercial side of life sciences for thirty years – first in a large organisation (ICI/Zeneca/AstraZeneca), before transitioning to the entrepreneurial world of biotech. Barbara joined the Francis Crick Institute in January 2018 as Entrepreneur-in-residence, where amongst other things, she co-founded, led and is now Chair of the KQ Labs accelerator, which is focused on start-ups from all over the UK who are making use of data/AI applied to health.

She is also Chief Business Officer of Autifony, where she's responsible for strategic partnering, fundraising and commercial aspects of drug development for CNS disorders. Barbara was

also Chair of Puridify, a UCL spin-out with a breakthrough biotherapeutics purification technology, which was acquired by GE (now Cytiva) in November 2017. She's a member of the investment committees of the LifeArc Early Ventures Fund and the Cambridge Enterprise Seed Fund. Previously, Barbara was CEO of Stabilitech, and she was Commercial Director at Arrow Therapeutics until the company was acquired by AstraZeneca. Barbara was also Senior Business Development Manager at Celltech.

Barbara has a BA and DPhil in Chemistry from the University of Oxford and is a Sloan Fellow from London Business School.



Giovanni Mariggi
Medicxi

Giovanni is a co-founder and Partner at Medicxi. Prior to Medicxi, Giovanni was a Principal at Index Ventures. He led Medicxi's investment in Aura Biosciences (NASDAQ:AURA), New Amsterdam (NASDAQ:NAMS) and Abivax (Euronext:ABVX). Giovanni currently serves on the boards of a number of portfolio companies, including Vaderis Therapeutics, Breakpoint Therapeutics, ViceBio and Kurome Therapeutics.

Prior to joining Index Ventures, Giovanni was at Cancer Research UK's London Research Institute (now the Francis Crick Institute) where he conducted research on vascular biology and angiogenesis.

Giovanni received a BSc in Biochemistry from Imperial College London and a PhD in Biochemistry and Molecular Biology from University College London.



Neil Jones

Cancer Research Horizons

Neil is responsible for developing our Therapeutic Innovation's portfolio of early drug discovery opportunities, in close collaboration with Cancer Research UK researchers and clinicians, as well as our drug discovery teams.

Neil has worked for Cancer Research UK drug discovery for over 14 years and is part of the leadership team that has overseen the creation of multiple drug discovery partnerships and delivered three recent clinical development programmes. He's also led the scientific negotiation and subsequent delivery of high-value drug discovery alliances with commercial partners including AstraZeneca and Celgene/BMS.

A cell biologist by training, Neil has over 20 years of drug discovery experience working at the interface between academic and industry and is a passionate believer that collaborative science is critical to deliver effective therapies to cancer patients.

Prior to joining Cancer Research Horizons, Neil obtained his first degree in Medical Biochemistry from the University of Birmingham, a PhD from the University of Southampton and conducted postdoctoral research at the Institute of Cancer Research.



Khatereh Ahmadi

MSD Ltd

Dr Khatereh Ahmadi has worked in the biotech/pharma industry for 20 years. She currently leads the Search and Evaluation Business Development team in Europe and Middle East at MSD and has covered oncology BD&L in those territories. Prior to her role at MSD, she was a co-founder and CEO of reViral Ltd, acquired by Pfizer in 2022, leading a Series A round of \$21m with Andara Partners and Orbimed.

She played a significant role in the spin out of Piramed Ltd, an oncology company, and subsequently was Head of Business Development, culminating in a significant deal with Genentech and acquisition of Piramed by Roche. Khatereh has consulted for a number of EU and US companies in the oncology field.

She obtained a PhD in biochemistry from King's College London and held a post-doctoral position at the Ludwig Institute for Cancer Research in London working in the PI 3-kinase field. Khatereh was awarded her MBA from Henley Management College.

Marketplace exhibition



Cancer Research Horizons is the innovation engine of Cancer Research UK – one of the world's largest charitable funders of cancer research. We bring together world-leading minds, bold ideas and the right partners to bridge the gap between academic research and taking drugs to market. We focus on the tougher, more profound ideas that can lead to true innovation, translating them into effective treatments and diagnostics for cancer patients.

To date, we've played an instrumental role in forming over 60 spin-out companies. We've helped bring 11 cancer drugs to market, borne out of Cancer Research UK's pioneering research. Through these drugs, we have enabled in excess of 6 million courses of treatment for cancer patients across the world.

With access to Cancer Research UK's network of 4,000 exceptional researchers, and £300+ million of annual research spend, we're a powerful partner in the fight to conquer cancer. By uniting our commercial partnerships and therapeutic innovation capabilities, Cancer Research Horizons is uniquely placed to support translational funding, entrepreneurial development, licensing and collaboration, spinout creation, and offer a full spectrum of drug discovery and clinical capabilities.

Every penny we make goes back into funding the next bold steps, to help bring forward the day when all cancers are conquered.



CancerTools.org is the first-of-its-kind non-profit, cancer-focused biorepository where researchers can deposit research tools they've developed in their labs. This includes antibodies, cell lines, organoids, small molecules, mouse models, cell culture media and other state-of-the-art technologies. With our in-house production and global coverage, we can produce, store and supply these tools to fellow scientists in their research to deepen our understanding of cancer and drive innovation.



One Nucleus is a not-for-profit life sciences and healthcare membership organisation headquartered in Cambridge. We support institutions, companies and individuals in the life sciences sector, providing local, UK-wide and international connectivity.

By providing this connectivity, One Nucleus seeks to enable our members to maximise their performance. This support helps them achieve, or better still exceed, the goals they have set for themselves. Biomedical and healthcare R&D have always been impactful in driving social and economic progress. In an increasingly outsourced, collaborative and multi-disciplinary sector, bringing the best people together is key to translating great innovation into great products that markedly improve patient outcomes and drive economic development. Attracting and enabling the best people to engage with is at the heart of the One Nucleus team ethos and what we continually strive to deliver.

Watch the 'About One Nucleus' explainer presentation and check out our most recent Annual Review. You can also search our members to learn more about One Nucleus member profiles.



OBN is the UK membership organisation focused on catalysing growth for the life sciences industry. Our network includes life sciences SME's, big pharma, academia, service providers, corporate partners, and investors. Our network of over 480 member companies is located across the UK, with our community benefiting from a broad range of services and support, including the delivery c.50 networking/partnering and investments-focused events each year, the OBN purchasing consortium, and advice and advocacy activities.

For membership enquiries, email: nicola.westgate@obn.org.uk
For more information visit: www.obn.org.uk

Established in 2013, **NIHR London In Vitro Diagnostics Co-operative** is a partnership between Imperial College London and Imperial College Healthcare NHS Trust. We are one of four NIHR centres that generate evidence to support diagnostic test development and adoption. Working with a large network of patients, clinicians and companies, we generate multi-dimensional evidence, including human factors, health economics, PPIE and market access, to inform product development for companies and researchers throughout the innovation pipeline. From identification of unmet needs, to developing value propositions and understanding barriers to adoption and implementation, we bring value to the UK NHS and community settings.

Some of our key missions:

Diagnostic Growth Hub

In collaboration with MedCity and London & Partners, we co-founded the MedCity Diagnostic Growth Hub (DGH) to stimulate growth of diagnostic companies by providing a 'one-stop shop' platform for easy and comprehensive access to the relevant capabilities offered by the partner organisations. DGH currently comprises London based universities, charities and private laboratories. DGH has hosted several successful industry-academic biomarker matchmaking events. We are currently planning one to be launched in early 2024.

Diagnostic Accelerator

In collaboration with MedTech Superconnector, London IVD has run diagnostic-focused accelerator programmes which combine interactive teaching, personalised evidence generation sessions and the opportunity to pitch to funders. In addition to teaching the fundamentals of evidence to innovators, London IVD hosts individual sessions with innovators, reviewing where they are in terms of evidence supported value propositions and what the next step might be to optimise their route to (the NHS) market.

Attendee list

First name	Last name	Job title	Company
Khalid	AbdulJabbar	CEO	Case45
Jean	Abraham	Professor	University of Cambridge
Zain	Ahmad	Medical Student	University of Exeter
Emma	Akuffo	L&D Consultant	Scientific L&D Consulting Ltd
Gulsah	Albayrak	Postdoc	University of Oxford
Maya	Alestwani	Business Development Associate	CancerTools.org
Aminah	Alotaibi	Assistant Research Professor	KACST
Tobias	Alpsten	CEO	iPLATO Healthcare Ltd
Sakina	Amin	DPhil Student	University of Oxford
Maral	Amrahli	COO	Apeikon Therapeutics
Angela	An	PhD Student	Cancer Research UK Cambridge Insititute
Pavel	Artemov	Investment Partner	Creator Fund
Fatima	Aziz	Business Development Associate	CancerTools.org (CRUK)
Irina	Babina	Chief Business Officer	Concr
Eun Young	Bae	Lab Manager	University of Oxford
Alice	Baggaley	Clinical Research Fellow	Imperial College London
Peter	Bannister	Managing Director	Romilly Life Sciences
Timothy	Bates	Chief Scientific Officer	Drugs With A Difference Limited
Mina	Bekheet	CEO and Managing Partner	Panacea Innovations
Kinga	Bercsenyi	Vice President of Business Development	Arctoris
Phil	Berry	Translation Manager	Cancer Research Horizons
Paul	Bhogal	Consultant Interventional Neuroradiologist	NHS
Supreet Kaur	Bola	PhD Student	UCL Cancer Institute

First name	Last name	Job Title	Company
Bhushan	Bonde	Innovation Lead	Avxcel Ltd
Danny	Bosch	AD Business Development and Commercial	ICHP
Martyn	Bottomly	Regional Translation Lead	Cancer Research Horizons
Simon	Boulton	Principal Group Leader	The Francis Crick Institute
Adam	Boxall	PhD Candidate	Sanger Institute
Lynne	Braidwood	Business Development Manager	Medicines Discovery Catapult
Tanmay	Burde	Junior Research and Development Engineer	Opto Biosystems
Marcos	Burger Ramos	PhD Student / Co-Founder	Barts Cancer Institute / Matrix Dynamics
Juliana	Callaghan	Entrepreneurial Programmes Manager, Search and Evaluation – Search and Evaluation	Cancer Research Horizons
Yolanda	Calle	Senior Lecturer	University of Roehampton
Deborah	Carter	Associate Commercialisation Director	QMI
Mervin Roy	Castro	Senior Staff Nurse	UCLH
Olivia	Cavlan	Chief Corporate Development and Strategy Officer	Alchemab Therapeutics
Ravi	Chana	Head of BD	Roche Diagnostics UK
Bill	Chi	Scientist	Tumour Biosciences
Phil	Clare	CEO	Queen Mary Innovation
Sarah	Cook	Senior Strategic Evidence Manager	Cancer Research UK
Lucia	Coral	Translation Manager, Search and Evaluation – Regional Translation	Cancer Research Horizons
Jessica	Corry	Postdoc	Francis Crick
Lymraina	Coutinho	Student	Barts Cancer Institute
Emma	Couves	Postdoctoral Fellow	Francis Crick Institute

First name	Last name	Job Title	Company
Andrew	Crockford	Director, Early Innovation Partnering	Johnson & Johnson
Lorraine	Croucher	BDM	Automata
Jack	Cuzick	Professor	Queen Mary University of London
Davide	Danovi	Senior Lecturer / Director	King's College London / bit.bio
Joseph	Day	Senior Business Development Executive	Cancer Research Horizons
Sebastien	de Bandt	Founder	Stealth Startup
Matt	De Vries	Co-Founder / PhD Student	Sentinal4D / The Institute of Cancer Research
Elitza	Deltcheva	Research Associate	UCL
Nathalie	Dhomen	Cancer Translation and Innovation Lead	Cancer Research Horizons
Tiffanie	Dihardjo	Student	KCL
Emma	Ditter	Bioinformatician	Univeristy of Cambridge
Nicky	Dixon	Research Events Manager	Cancer Research UK
Mustafa	Djamgoz	CEO and CSO	Celex Oncology Innovations Ltd
Barbara	Domayne-Hayman	KQ Labs Chair and Entrepreneur in Residence	The Francis Crick Institute
Greg	Dow	Research Development Manager	King's College London
Lee	Dunham	Director of Business Development	Cell and Gene Therapy Catapult
Steve	Durant	Vice President, Scientific Director	Evotec
Keehyun	Earm	Deputy General Manager/Head of Venture Desk London	Korea Development Bank
Robert	Easton	CRUK Trustee	Robert Easton
Mark	Edbrooke	Consultant	Mark Edbrooke
Olivia	Edwards	Business Development Executive	Cancer Research Horizons
Marisa	Elezi	General Medicine Doctor and Hematology Resident	Mother Tereza Hospital

First name	Last name	Job Title	Company
Mariam	ElShatlawy	Investor Relations	Infinitopes
Alessia	Errico	Associate Director – Search and Evaluation	Cancer Research Horizons
Alice	Evans	PhD student	Oxford University
Samuel	Eyob	ML Researcher	UCL IoO
Thomas	Fanthom	EngD Student	UCL
Louise	Fets	Group Leader	MRC LMS
Lauren	Ford	Imperial College Research Fellow	Imperial College London
Iain	Foulkes	CEO	Cancer Research Horizons
Maria	Frolova	Associate Commercialisation Manager	Queen Mary Innovation Limited
Alicia	Gailliez	Business Development Manager	One Nucleus
Kenneth	Galbraith	CEO	Zymeworks
Monica	Ganan	Translation Lead	Cancer Research Horizons
Sara	Garcia Gomez	Senior Business Manager	UCL Business
Verena	Gautsch	Research Assistant	Oxford University
Ian	Gibbs-Seymour	CRUK Career Development Fellow and Group Leader	University of Oxford
Princess	Glover	Lawyer and Researcher	Princess chambers
Tas	Gohir	Senior IP and Commercial Research Manager	Guy's and St Thomas' NHS Foundation Trust
Sam	Goldsmith	Head of CoR&I	CGT Catapult
Camila	Gomes	PhD Student	Kings College London
Caudia	Goncalves	Translation Executive, Search and Evaluation – Regional Translation (South)	Cancer Research Horizons
Florian	Groelly	Venture Manager	Creative Destruction Lab
Andrew	Guo	Director	BioMavericks Ltd
Bakul	Gupta	Co-Founder	ImmTune Therapies

First name	Last name	Job Title	Company
Tanmay	Gupta	Programme Manager	University of Cambridge
Mark	Halling-Brown	Head of Scientific Computing	OPTIMAM
Sobia	Hamid	Founder	Nuwa
Peter	Hampson	Medical Manager	Roche Diagnostics
Jennifer	Harris	Director of Research Policy	The Association of the British Pharmaceutical Industry (ABPI)
Nehaal	Hashmi	Senior Business Development Manager	Automata
Ahmet	Hazini	Postdoc	University of Oxford
Jennifer	Heaney	Research Fellow	University of Birmingham
Tony	Hickson	Chief Business Officer	Cancer Research Horizons
Rayian	Higzi	University Student	University of Sussex
Susan	Hodge	Consultant	Independant
Roberto	Hofmann	Co-Founder / CEO	effectorMED
Faith	Howard	Postdoctoral Researcher	The University of Sheffield
Dan	Hudson	VP Partnering	Infinetopes
Caroline-May	Huxley	Programme Manager	Great Ormond Street Hospital
Elise	Jenkins	Co-Founder	Opto Biosystems
Sneha	Jha	Research	Imperial College London
Matthew	Johnson	Partner, Patent Attorney	HGF Limited
Samuel	Jole	Associate Director	Veracyte
Benjamin	Jones	Policy Adviser	Cancer Research UK
Amanda	Jones	Strategy Leader	Revvity
Neil	Jones	Vice President of Portfolio Generation	Cancer Research Horizons
Solon	Karapanagiotis		
Cagla	Kaya	PhD Student	Francis Crick
Hannah	Kettley-Linsell	Research Associate	London In Vitro Diagnostics Co-operative
Salim	Khakoo	Professor of Hepatology	Univeristy of Southampton

First name	Last name	Job Title	Company
Subhan	Khan	Medical Student	Southampton
Ahmadi	Khatereh	Head, Europe S&E and Oncology Lead	MSD
Sreeya	Kodavali	Medical Student	University of Southampton
Lee	Koh	Field Application Scientist	ChemoMetec
Annemieke	Kok	Lab Manager Senior Scientist	Infinitopes
Dana	Koludrovic	Translation Manager	Cancer Research UK
Mobeen	Kosar	CEO	ConsoneAI
Monika	Kraszevska-Hamilton	Seniot Commercialisation Manager	QMI
Min Wen	Ku	Application Scientist	VectorBuilder
Sedef	Kutlu Özkaya	Founder	Formyhealth
Jonathan	Kwok	CEO	Infinitopes
Robert	Kypta	SL	Imperial College London
Adam	Laing	CSO	IMU biosciences
Dristi	Lalwani	Business Development Associate (MedTech)	Cancer Research Horizons
Priscilla	Lau	Postdoctoral Researcher	King's College London
Gregor	Lawrence	Accelerate Scheme Participant	Cancer Research Horizons
Arnaud	Legrand	Programme Manager	CRUK Convergence Science Center
Salwa	Lin	PhD Student	University of Oxford
Julie	Little	Associate Director Strategic Alliances	Cancer Research Horizons
Beenish	Luqman	Researcher	Barts
Aakriti	Maharjan	Student	University of East London
Tombi	Makuyana	PhD Student	Cambridge
Fahd	Malik		Google Health UK
Vanessa	Marensi	Lecturer	University Of Chester
Giovanni	Mariggi	Co-Founder and Partner	Medicxi Ventures

First name	Last name	Job Title	Company
Jacqui	Marshall	Research Programme Manager	Cancer Research UK
Zoe	Martin	Senior Policy Manager (Science)	Cancer Research UK
Marie	Massaquoi	Director	Mer Professional Ltd
Phil	Masterson	Associate Director	Cancer Research Horizons
Marie	McAvoy	CSO	Nanosyrinx
Nicola	McCarthy	Head of Research	Milner Therapeutics Institute
Jason	Mellad	CEO and Co-Founder	Start Codon
Ketaki	Mhatre	Postdoc	QMUL
Ben	Milborne	Associate Commercialisation Manager	Queen Mary Innovation
Ajay	Mistry	CEO / Founder	Oppilotech Ltd
Peyman	Moh	CEO	Foretell Innovation Lab
Katy	Montague	Senior Director, Oncology External R&D	AstraZeneca UK Ltd
Tanya	Moore	Investment Principal	Cancer Research Horizons
J	Mure	Senior Advisor	Business Finland
Elena	Muyo	UK Director	CRIS Cáncer Foundation
Aurora	Negro	Translation Executive, Search and Evaluation – Regional Translation (South)	Cancer Research Horizons
Maria	Neofytou	Lecturer	University of Cambridge
Michelle	Ng	Associate	Namier Capital
Tony	Ng	Head of School, School of Cancer and Pharmaceutical Sciences / VP, Digital Biological Twin Unit	King's College London / GSK
Melody	Ni	Senior Research Fellow	NIHR London IVD Co-Operative
Natalia	Novac	Partner	Delin
Enny	Ocwee	Intern at Cancer Research Horizon	Cancer Research Horizon

First name	Last name	Job Title	Company
Annalize	Odamtten	General Practice Assistant	Morris House Group Practice
Gwen	O'Driscoll	PhD Student	Institute of Cancer Research
Klaus	Okkenhaug	Professor of Immunology	University of Cambridge
Birgitta	Olofsson	Training Programme Manager	CRUK Cambridge Centre
Victoria	Orovboni	Business Development Associate	CancerTools.org
Pahini	Pandya	CEO and Founder	Panakeia
Nigel	Parr	Director	MoonFire Consultancy
Steve	Parr	Business Development	Datar Cancer Genetics
Dr Ramila	Patel	Learning and Development	Bioeagles
Arkoprovo	Paul	Research Associate	University of Cambridge
Elena	Pavlova	Research Fellow	University of Cambridge
Martin	Peacock	Director – CSO	Zimmer and Peacock Ltd
Oliver	Pearce	Group Leader / Co-Founder	Barts Cancer Institute
Frances	Pearl	Senior Lecturer in Bioinformatics	University of Sussex
Eleonora	Peerani	Director of Diagnostics R&D	Pear Bio
Michela	Perani	Business Development Executive	Cancer Research Horizons
Christopher	Peters	Clinical Senior Lecturer and Consultant Upper GI and General Surgeon	Imperial College London
Una	Pipic	SVP, Europe and APAC	Tempus
Zofia	Piszka	PhD student	UCL Cancer Institute
Dominic	Pollard	Business Development Executive	Cancer Research Horizons
Tanya	Prendergast	Director	BIDII
Chris	Price	Research Scientist	Quadram Institute Biosciences
Andreea	Prisecaru	Clinical Development Manager	Beyond Blood Diagnostics

First name	Last name	Job Title	Company
Elliott	Puttock	Technology Transfer Fellow	LifeArc
Bunga	Ramadhani	Postgraduate Student	UCL
Farania	Rangkuti	Polaris Fellow	Entrepreneur First
Tommy	Rennison	Regional Translation Lead	Cancer Research Horizons
Kayvan	Richter	Research Communications and Marketing Manager	Cancer Research Horizons
Jamie	Rintoul	Consultant	Epidarex
Ana	Rio-Machin	Post-Doctoral Research Assistant	Barts Cancer Institute QMUL
Intouch	Ruckpanich	Tech Scouting	Siam Cement Group
Roghaiyeh	Safari	CSO	RS&RS Scientific
Salimi	Salimi	CEO	RS&RS Scientific
Tendayi	Samuriwo	CEO	Omnia Biosystems
Isatou	Sarr	Scientific Officer	Medical Research Council Unit The Gambia at the London School of Hygiene and Tropi
Katerina-Vanessa	Savva	Research Associate	Imperial College London
Cigdem	Selli Karakaya	Translation Associate	Cancer Research Horizons
Advaita	Seth	Student	King's College London
Reshma	Shah	GP	NHS
T	Shahbazi	BD Manager	MSD
Mohammed Sameer	Shaik	Business Development Intern	Omnia Biosystems
Jeff	Shi	UK Regional Director	MedchemExpress
Tomoko	Shirayama	Area Sales Manager	PHC Europe B.V.
Gillian	Shuttleworth	Translation Executive	Cancer Research Horizons
Neetu	Sinha	Consultant	Karkinos Health Care
Austin	Smith	Doctor	Swiftbio Consulting Ltd
Georgia	Smith	Account Manager	Thermofisher Scientific
Tanya	Soliman	Group Leader	Queen Mary University London

First name	Last name	Job Title	Company
Siamak	Sorooshyari	Student	UC Berkeley
Alice	Soteriou	Commissioning Editor	Taylor and Francis
Karen	Spink	Head of Medicines	Innovate UK
Hugh	Spotswood	Director, Scientific Relations	BioNTech
Georgia	Stavrou	PhD student	UCL
Laura	Stennett	Business Manager	LifeArc
Lucy	Stuart	Senior Research Events Manager	Cancer Research UK
Wesley	Sukdao	CEO	Proteotype Diagnostics
Sonia	Suleman	Account Manager	ThermoFisher
Arif	Surani	Postdoc	Cancer Research UK Cambridge Institute
Susanti	Susanti	CEO	PT. PathGen Diagnostik Teknologi
Moh	Tadayyon	Co-Founder	Apeikon Therapeutics
Istvan	Taisz	Project Manager	Turbine
Fazlur Rahman	Talukdar	Research Associate	Cancer Research UK Cambridge Institute
Christopher	Tape	Associate Professor	UCL Cancer Institute
Camille	Terfve	Partner	Mewburn Ellis LLP
Maria	Thanou	Professor / CEO	Apeikon Therapeutics / KCL
Megan	Thomas	Multimedia Editor	Drug Discovery World
Nanasaheb	Thorat	Researcher	University of Limerick
Irina	Titkova	Postdoctoral Research Assistant	Barts Cancer Institute, QMUL
Rebecca	Todd	Investment Director	Longwall Venture Partners LLP
Cathy	Tralau-Stewart	Executive Director Milner Institute	The Milner Institute
Vineeta	Tripathi	CEO	Vitarka Therapeutics
Julial	Tuson	Chair	HDRG
Elly	Tyler	Postdoc / Co-Founder	Barts Cancer Institute / Matrix Dynamics

First name	Last name	Job Title	Company
Julia	Tyson	Chair	HDRG
Maria Myrsini	Tzioni	PhD Student	University of Cambridge
Anthony	Uren	Lecturer	University of Plymouth
Sabari	Vallath	Faculty Research Manager	Queen Mary University of London
Bart	Vanhaesebroeck	Professor	UCL Cancer Institute – London
Lalanti	Venkatasubramanian	Scientist	University of Cambridge
Daniel	Veres	Chief Scientific Officer and Co-Founder	Turbine
Ieuan	Walker	Academic Clinical Fellow	University of Cambridge
Esmé	Walters	Senior Account Manager	Zyme Communications
Haichao	Wang	PhD Student	University of Cambridge
Michelle	Wang	Regional Head	GenScript
Haichao	Wang	PhD Student	University of Cambridge
Yucui	Wei	Researcher	University College London
Andrew	Wells	Partner	HGF Limited
Matthew	Wheatley	Student	Harlow College
Fiona	Winwick	Research Events Manager	Cancer Research UK
Ben	Woodington	Co-Founder	Opto Biosystems
Emma	Yates	CSO	Proteotype Diagnostics
Simon	Youlton	Director Early Strategic Partnerships	Novartis
Nekisa	Zakeri	NIHR Academic Clinical Lecturer	University of Birmingham
Xiaomeng	Zhang	Research Associate	University of Cambridge
Chloe	Zhang	Investor Relationships Manager	CPI Enterprises

