



BROADENING HORIZONS

MENTORING PROGRAMME 2026



Empowering early-career researchers
interested in translational research

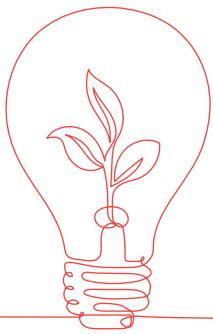


BROADENING
HORIZONS



CONTENTS

An introduction to Broadening Horizons	1
- At a glance	2
How the programme works	3
- Who are the mentors and mentees?	3
- Why cross sector mentoring?	4
The impact so far	5
How to sign up	6
Participating organisations and institutions	7



AN INTRODUCTION TO BROADENING HORIZONS

Jointly funded by



Broadening Horizons is a cross-sector mentoring programme designed to support, develop and empower early-career researchers who are interested in translational research.



Now entering its fifth year, the programme is jointly funded by Cancer Research Horizons and Wellcome.

Since launch, Broadening Horizons is proud to have cultivated a community of over

600 INDIVIDUALS
FROM

87 ORGANISATIONS &
INSTITUTIONS.

Broadening Horizons equips early-career researchers in health and life research with the skills, networks and insight to explore how their work might translate beyond discovery. The programme helps participants understand translation in its widest sense, from commercial innovation and policy influence to societal insight and community health.

Through cross-sector mentoring, expert-led training and networking across the research ecosystem, participants gain practical tools and fresh perspectives to help them move their work forward with clarity and purpose.

Broadening Horizons has a strong evidence base demonstrating its impact on researchers' confidence, clarity and understanding of translational pathways. We are delighted to welcome our next cohort in May 2026 and continue supporting researchers as they explore the future direction of their work.

“ At Cancer Research Horizons, we are committed to advancing the discovery and development of new therapeutics, transforming cutting-edge science into patient impact. Mentorship plays a crucial role in this process. Through our Broadening Horizons mentoring programme, we provide emerging innovators with the guidance and expertise needed to navigate the journey from discovery to translation. By investing in mentorship, we not only support professional development but also contribute to the progress of impactful interventions. ”



ALESSIA ERRICO, ASSOCIATE DIRECTOR SEARCH AND EVALUATION, CANCER RESEARCH HORIZONS



AT A GLANCE

- ▶ A nine-month, structured mentoring programme supporting early-career researchers in health and life research
- ▶ Cross-sector matches with experienced leaders from health research, innovation, policy, and related sectors
- ▶ A blend of in-person and virtual learning, with over 26 hours of professional development content
- ▶ Mentoring pairs meet at least five times throughout the programme
- ▶ A growing network across the health and life research sector

Please note that the programme will be delivered in English

“ Discovery Research’s mission is to generate new knowledge that could transform health in ways we can’t always anticipate today. Our remit is broad, funding researchers across the sciences, arts and humanities, who all contribute to pushing back the boundaries relating to health life and wellbeing.



Even with our focus on discovery research, we know that researchers should be building connections and opportunities to open future pathways for translation of their work. The Broadening Horizons programme is designed to help build those skills and broaden viewpoints from an early stage, helping researchers place themselves and their work within the wider research and innovation system, and empowering them to walk new pathways in the future. ”

BEN MURTON,
HEAD OF EARLY CAREER AND CAREER DEVELOPMENT RESEARCHERS DISCOVERY RESEARCH, WELLCOME

HOW THE PROGRAMME WORKS

Broadening Horizons provides development and support to early career researchers through structured mentoring, events and training, all centred on cultivating the skills and confidence to navigate the requirements of translational research.

WHAT IS THE TIMELINE?

Programme Launch	Development Lab 01	Midway event	Development Lab 02	Close celebration
<i>Discovering translation</i>	<i>Purposeful communication</i>	<i>Overcoming barriers</i>	<i>The power of resilience</i>	<i>Becoming a decision maker</i>
In-person: May 26	Virtual: July 26	Virtual: September 26	Virtual: November 26	In-person: February 27

WHO ARE THE MENTORS AND MENTEES?

MENTEES

UK and RoI early career researchers which includes post-doctoral and junior group leaders within the first few years of independence and/or on their first permanent, open-ended or long-term rolling contract.

At the current time, this programme is not intended for PhD students.

MENTORS

We welcome mentors with diverse backgrounds across health and life research from those at organisations developing health-related innovations (e.g. therapeutics, vaccines, medical devices, digital health products) to those in public health, the arts, humanities, social sciences, and bioethics.

Mentors should have an interest in mentoring early-career researchers from academic institutions and have a PhD or equivalent experience to participate in the programme.



We welcome early career-researchers who:

- ▶ Are curious about the translational potential of their research
- ▶ Want to strengthen their professional skills, networks and confidence
- ▶ Ready to take an active role in their own development

We welcome mentors who bring experience from across health and life research, including:

- ▶ Health innovation, therapeutics, diagnostics, devices and digital health
- ▶ Public health, population health, and social sciences
- ▶ Policy, funding, arts, humanities and ethics
- ▶ Clinical and commercial translational pathways

We're looking for mentors who:

- ▶ Hold a PhD or equivalent professional experience
- ▶ Enjoy supporting emerging researchers
- ▶ Bring insight into how different sectors contribute to translation
- ▶ Offer thoughtful challenge, active listening and honest guidance

Mentors consistently report that the programme strengthens their own leadership and coaching skills, expands their networks, and provides a rewarding opportunity to support the next generation of translational thinkers.



WHY CROSS-SECTOR MENTORING?

Cross-sector mentoring opens up new ways of thinking about research and its potential real-world applications. By pairing researchers with mentors from diverse fields, the programme creates space for honest conversation, practical guidance and new perspectives that support professional development.

This approach helps participants:

- ▶ Recognise opportunities to translate discoveries into meaningful outcomes
- ▶ Understand how different sectors contribute to translational pathways
- ▶ Build confidence in communicating their ideas to a wider audience
- ▶ See their work in the context of the broader research and innovation ecosystem

THE IMPACT SO FAR

Broadening Horizons has built a clear and growing evidence base demonstrating the programme's value for early-career researchers. Participants report increased confidence, stronger professional clarity and a deeper understanding of how their work might translate beyond discovery.

“ My mentor guided me in my professional and personal life and gave me perspective in my next steps. She has provided me with her skills and experience, which have been of invaluable help. ”

MENTEE



Highlights from the 2025 results include:



97% gained exposure to new ideas and perspectives



84% developed insight into how different sectors contribute to translational work



90% increased their confidence and clarity about their professional direction



Match quality also remains a major strength, with 90% of mentees and 96% of mentors rating their match as great and exceptional. Mentors describe the experience as energising, rewarding and a privilege, with 80% reporting improved leadership skills and 68% building new networks.



87% felt supported in setting translational goals and strategies



87% improved their networking and communication skills

These results demonstrate how Broadening Horizons helps researchers build the mindset, skills and relationships needed to explore translational pathways with confidence and purpose.

The programme has demonstrated significant long-lasting impact for past participants. Mentees developed a thorough understanding of the different players in the translation path, their contributions, and the benefits of working in this space.

Lucy Huitong Li, former postdoctoral researcher at University of Manchester speaks about the impact of her mentor on her own research journey and how her research might translate into the real world.

You can watch [Lucy's interview here](#).



*Independent evaluator of initiatives designed to drive positive change through social impact and sustainability.



“The Broadening Horizons programme is the best I have experienced as a mentor. Its ability to match mentor to mentee is extraordinary and precise. It’s almost intuitive to the point of perfect mentor-mentee matches. Be Proud! Long may it continue.”

MENTOR

HOW TO SIGN UP

The Broadening Horizons programme welcomes both organisations and individual participants.

- ▶ **Mentors** with experience across the translational landscape from research and innovation to policy, public health and related sectors are invited to join our mentor community and support the 2026 cohort.

[APPLY HERE](#)

- ▶ **Early-career researchers** working in health and life research can express interest directly through the application link.

[APPLY HERE](#)



Participating organisations and institutions

Abzena	Foretell Innovation Lab	MRC Laboratory of Medical Sciences	UCB Pharma
Accession Therapeutics	GE Healthcare Partners	MSD	University College London
Allergan	Genomics England	MSI Reproductive Choices	University of Birmingham
Aston University	GlaxoSmithKline	Nanna Therapeutics	University of Bradford
AstraZeneca	ICR	Neem Biotech	University of Bristol
Autolus Therapeutics	Illumina	Norgine	University of Cambridge
Barinthus Bio Plc	Immersive Rehab	Nourish Global	University of Dundee
Bio-Techne	Immunocore	Novartis	University of Edinburgh
Bournemouth University	Imperial College London	Oxford Science Enterprises	University of Glasgow
Cambridge Stem Cell Institute	InnoSpective Limited	Parkwalk Advisors	University of Leeds
Cardiff University	Institute of Cancer Research	Pfizer	University of Leicester
Cell and Gene Therapy Catapult	Institute of Genetics and Cancer	Quality Brewer	University of Liverpool
Charles River Laboratories	IP Group	Queen Mary University	University of Manchester
Circles Health & Wellbeing	King's College London	Renegade Brewery	University of Nottingham
Cobra Logistics	LabCorp	RFM Associates	University of Oxford
Coventry University	Lancaster University	Roche	University of Southampton
CRUK Cambridge Institute	Leicester University	Sheffield University	University of Sussex
Curve Therapeutics	Lightpoint Medical	Telix	Warwick University
Dyson	London School of Economics	The Francis Crick Institute	Wellcome Sanger Institute
Enhanc3d Genomics	Lonza	Thermo Fisher Scientific	Wellcome Trust

For more information or to sign up for the programme, contact the Broadening Horizons team:

broadeninghorizons@moving-ahead.org

MORE FROM MOVING AHEAD

At Moving Ahead we are always developing exciting new approaches to improving workplace diversity, equity and inclusion. To learn more about our experience and what we have to offer, please take a look [here](#)

If you'd like to explore our offerings further, or discuss a specific challenge you'd like help to overcome, please just get in touch: contactus@moving-ahead.org

BROADENING
HORIZONS

